

| Compact CL 2019 |

FLATBED APPLICATORS



CARBON FIBRE COVER DESIGN
BRUSHED STAINLESS STEEL PARTS
COVERED LINEAR GUIDE
END POSITION HYDRAULICS
SHOCK ABSORBERS

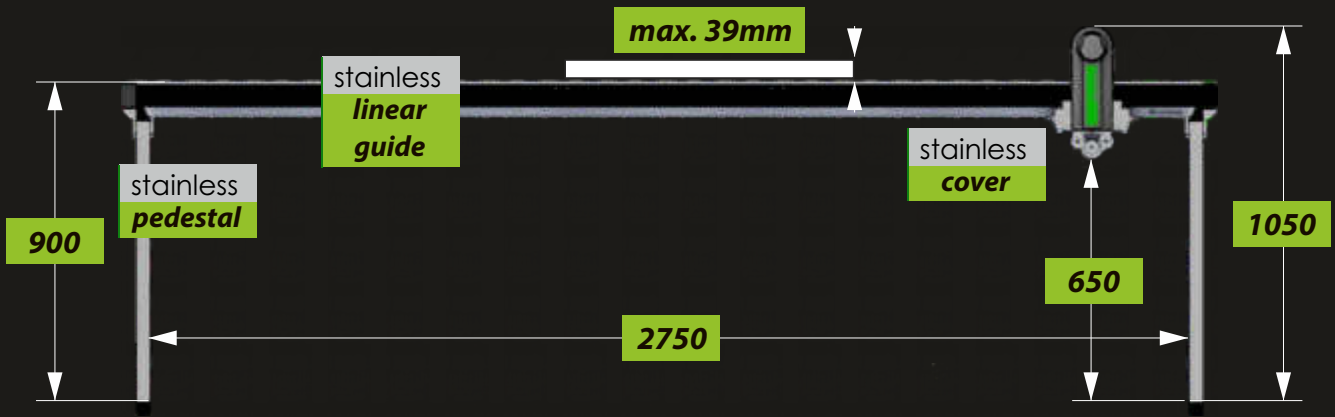
MOTOR & LED BACKLIGHT AVAILABLE



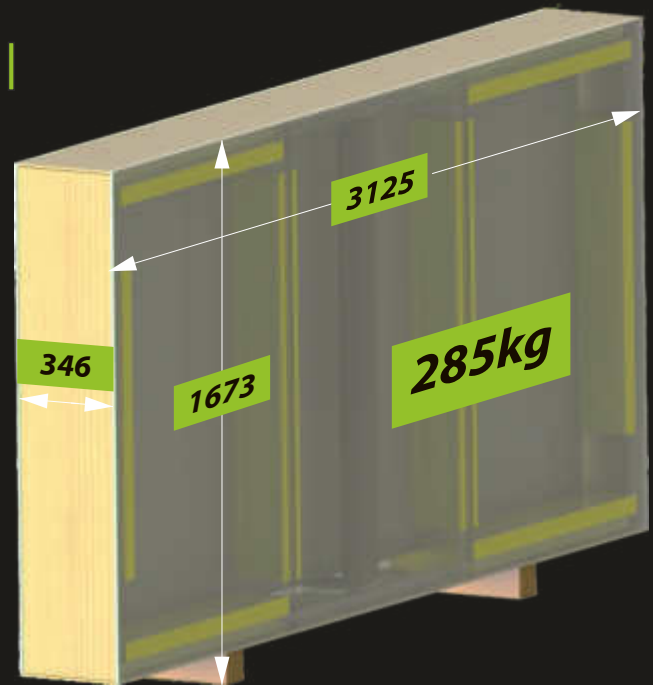
| machine footprint, working area |



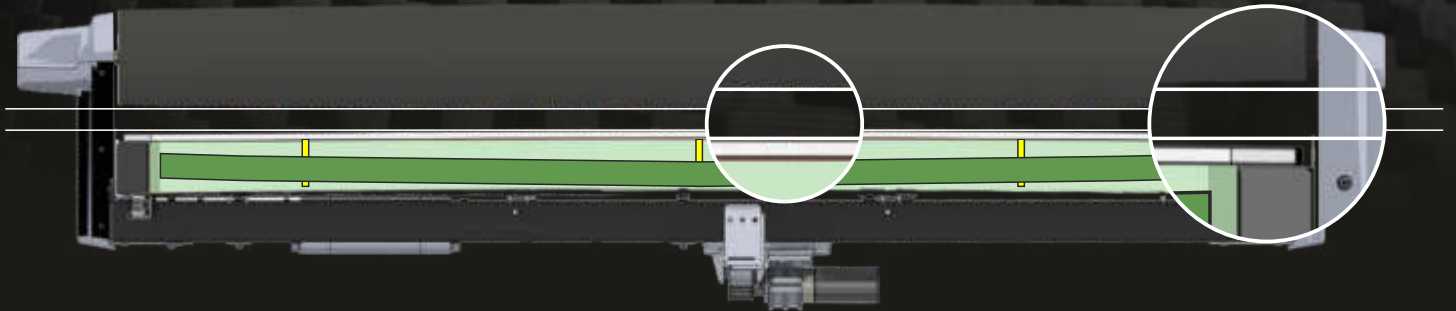
| stainless parts |



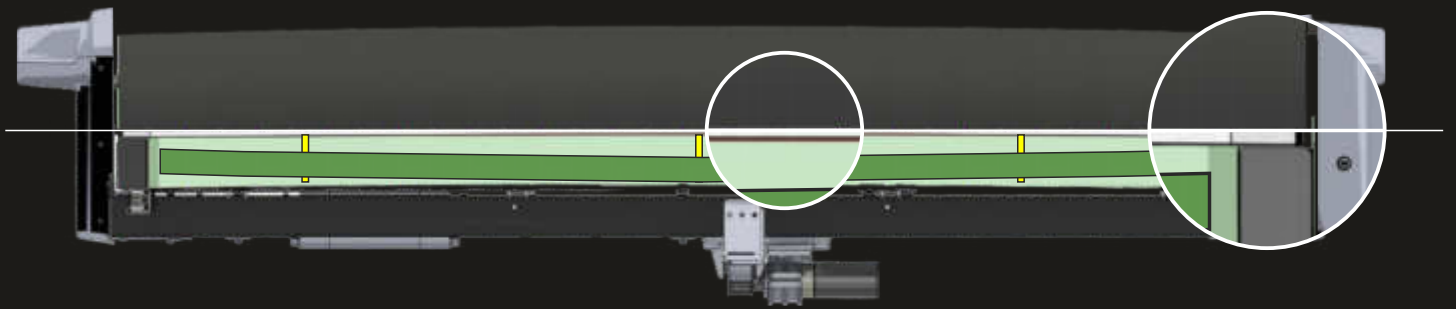
| wooden box |



convex table surface &
CNC brushed convex roller

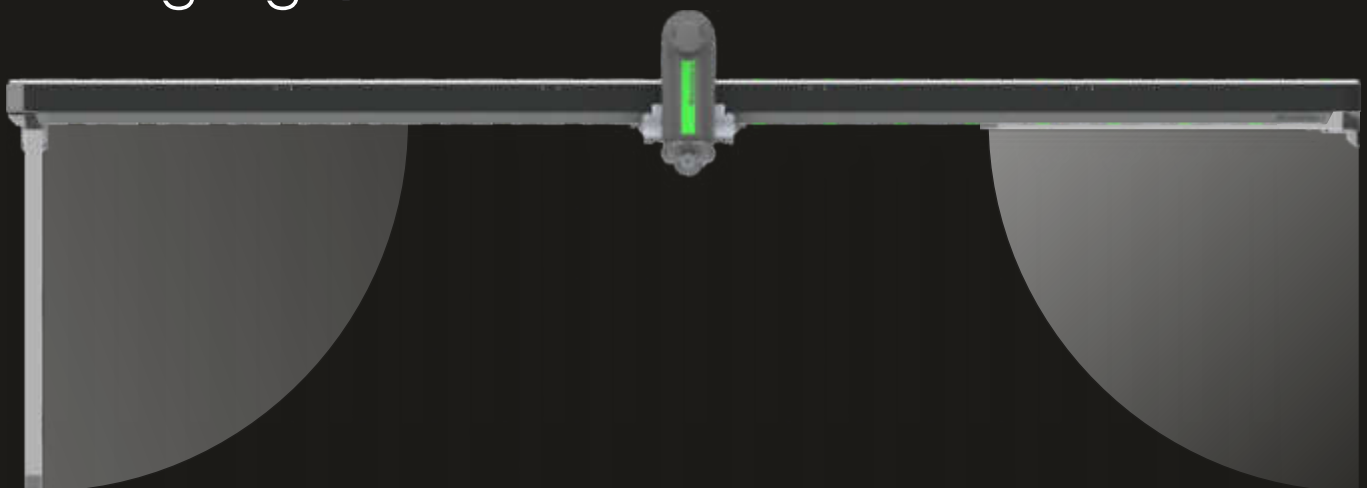


— internal embedded reinforcement — set screws



Perfectly flat when roller is lowered - this is the key to a reliable applicator. Our (patent pending) solution using two internally embedded beams gives incredible reliability and stability to the table...

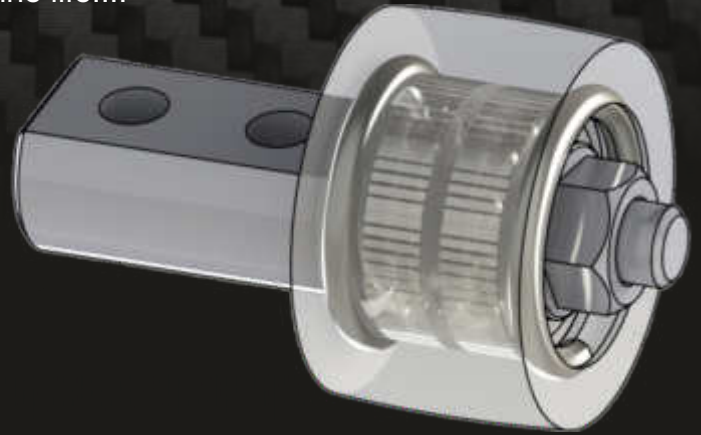
| folding legs |



Folding legs make the initial assembly quick and easy. The Compact can be moved from one room to another in just a few minutes. Optional shelves can be easily added thanks to pre-threaded mounting points.

| precision guide, fits perfectly |

Single metal bearings rolling directly on the guide surface are a poor manufacturing solution. We don't do this! Each Compact pulley contains two precision bearings encased in a protective housing. This results in amazing durability, extreme accuracy and much longer machine life....



| application roller from Germany |

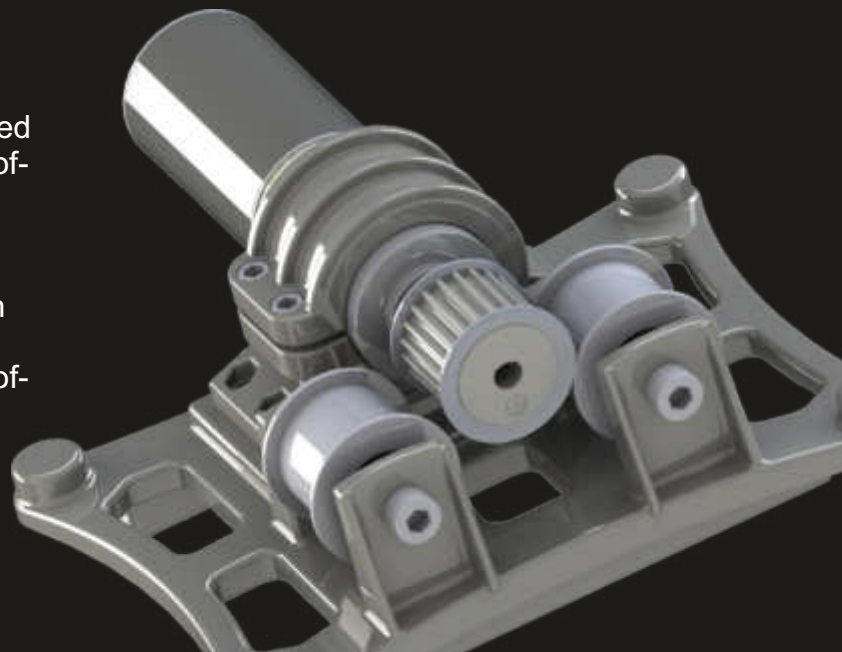
Our perfectly manufactured roller using a CNC brush machine, German rubber and German precision will help you in your work every day. The roller is the key component on a flatbed applicator. Consequently, this part needs to be accurate, durable and easy to maintain. Our rollers are alcohol, oil and abrasion resistant, resulting in excellent lifespan and simple maintenance procedures.



| optional motor drive set available |

A powerful motor gives your applicator another dimension. This dimension is efficiency. We have one decade's experience with motorised machines. Our customers appreciate the ease-of-use, rapid application and excellent results.

The motor set can be added to any Compact CL2019 machine at any time, by the user and in only a few minutes.
motor + flatbed applicator = more speed, ease-of-use and great results



| LED backlight 280W |

The backlight set can be added to any Compact CL2019 machine at any time, by the user and in only a few minutes - no tools needed.

All 15 aluminium plates include magnetic holders for easy click-in/click-out mounting and disassembly

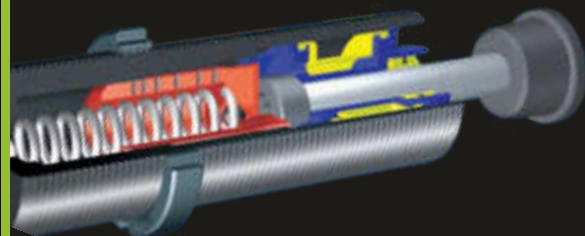
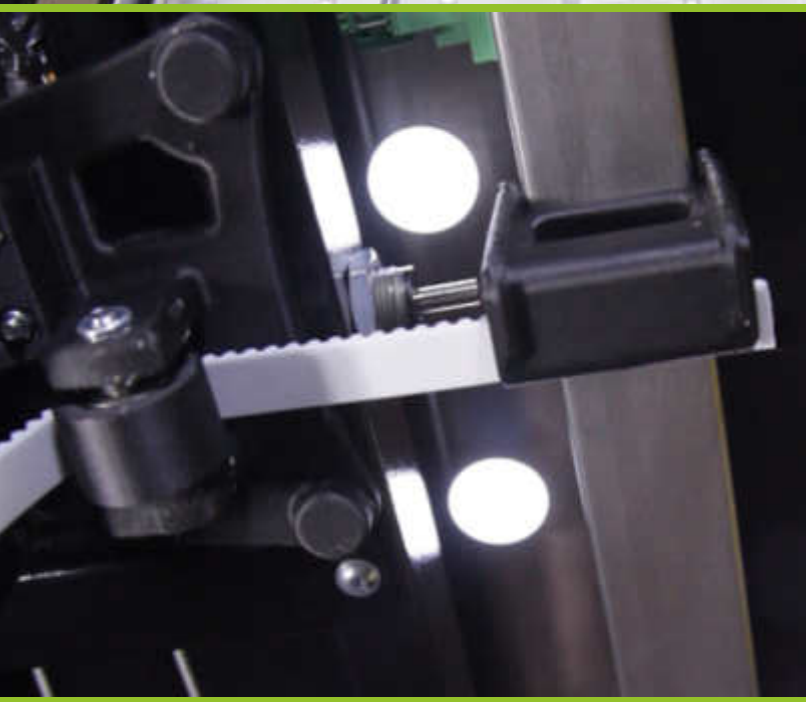
An incredible 280 watts of LED power adds another dimension to your work. Takes the stress out of the alignment process!

Set includes:

15 LED plates

all connection wiring

MeanWell power supply 280w 24v



TWO END POSITION HYDRAULIC SHOCK ABSORBERS

They optimize machine performance in a reliable and effective manner by decelerating the roller at the table ends quickly and without recoil.

MANUFACTURER:

DEALER:

Lamidesk s.r.o. Street: **Hrudkov 79**
City: **Vyšší Brod**, ZIP: **382 79** Country: **Czech**

VAT: **CZ0565774**

phone: **+420 604 349 624**

web: www.lamidesk.cz